



**PIRNAR.**

SINCE 1968

P E R G O L A S

L I F E   I S   O U T S I D E



---

We believe in miracles. We believe in the inexhaustible potential of human imagination. We believe in a future that pushes the boundaries of what is possible. We are proud to be trendsetters and our best products are the first choice for those with exquisite taste. For those who know that nothing is impossible. For you.



Roman Pirnar

*Owner and director of Pirnar d.o.o.*

---

## LIFE IS OUTSIDE

When you finally get home and feel the relaxed atmosphere. At last. Your oasis of peace, your refuge. All the daily noises slowly fade away. With deep satisfaction you look back to a successful day and you know that it will be followed by a precious time, intended just for you. You step out of the house barefoot and see the soothing colours of serenity in front of you. You breathe in and breathe out. Your heart is finally home. Under the most beautiful shadow, where life blossoms again and refreshes you with new energy, which allows you to gaze upon beauty again and listen to the harmony of the real world.













---

## DISCOVER NEW DIMENSIONS OF YOUR HOME.

*Nowhere else will you find such solid, durable, and comfortable pergolas with pure and aesthetic design.*

### **Ingenious construction, designed exclusively for pergolas.**

The robust construction has no visible screws and therefore does not require any additional assembly procedures. Elegant and featuring refined design.

### **Exceptional structural strength.**

Normal pergolas have pillars made of square tubes, while the **PIRNAR** pergolas use pillars that are made of an incredibly solid internal cross structure. They can withstand severe gusts of wind and up to 550 kilograms of snow per square meter.

### **Ultimate watertightness.**

Thanks to the effective sealing, perfect watertightness is ensured across the whole pergola, from louvers to the floor. Extremely wide profiles prevent water from overflowing even during heavy rain.

### **Easy and fast installation.**

Sophisticated design with modular profiles enables easy and fast installation. The entire construction can be set up faster, with uncompromising quality and lower costs.

### **Invisible and noiseless motors.**

The **PIRNAR** pergolas are equipped with unique and patented silent rotation system. The turning motor is hidden in the first louver, where it is protected from all external influences and is therefore more durable.

### **Huge area with no pillars.**

You can cover up to 50 square metres using only four pillars, without any additional support elements.

### **Additional equipment for maximum comfort.**

You can choose between motorised ZIP blinds, sliding panels, wind protection from sliding glass panels and LED lighting with dimming options.

### **All custom-made, accurate to a millimetre.**

Designed to the last detail, each **PIRNAR** pergola is made according to your wishes and measurements.



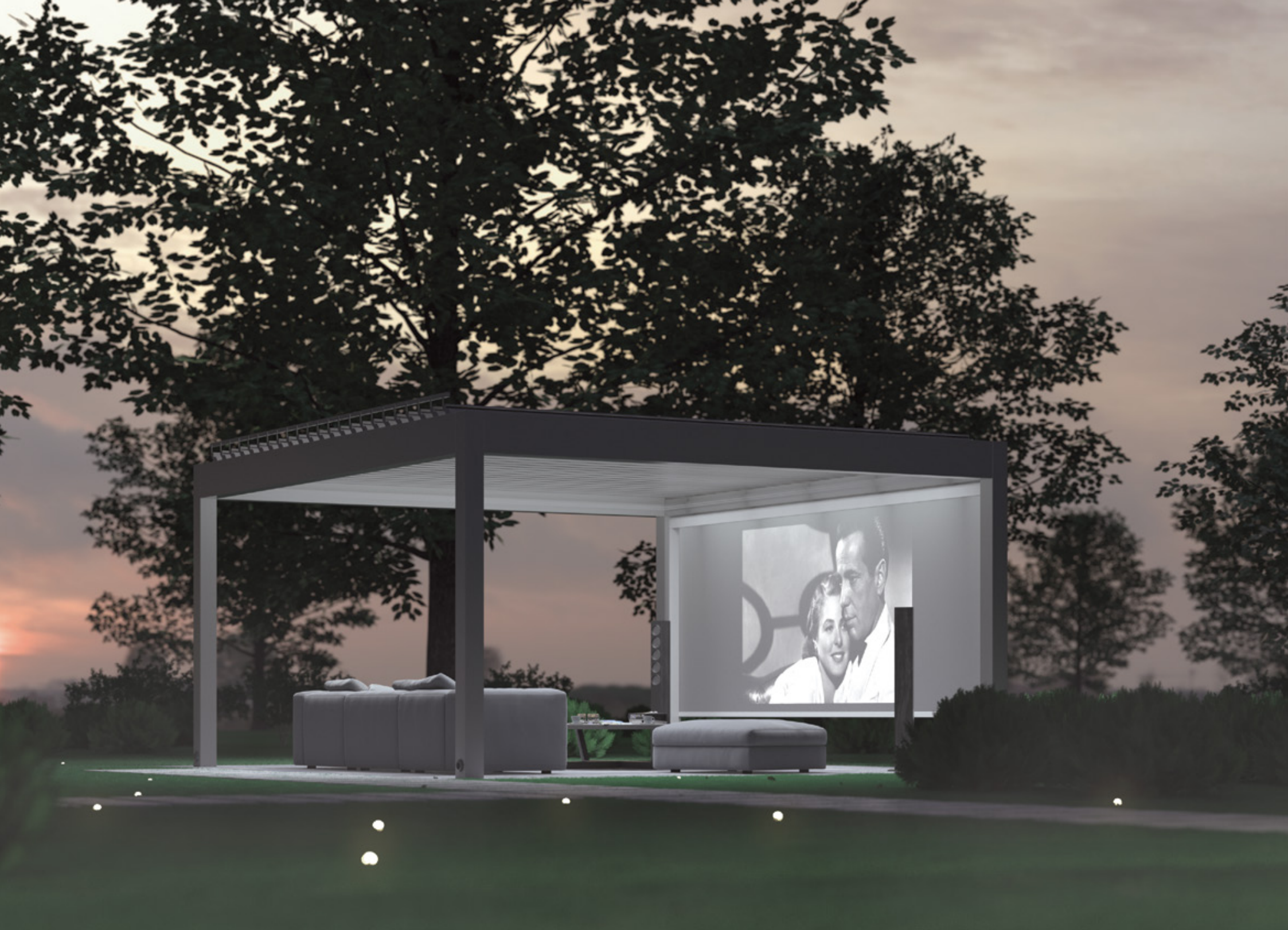
---

## WELCOME HOME

Home is not just a place, where we live. It's not just a shelter from the storm and a safe place, where our heart comes to rest. Home is a never-ending source of inspiration that opens the door to new dimensions and ideas of living. It can turn into a cinema under the stars, where you can watch your favourite movie with a special someone and experience many unforgettable moments.







## EARN YOUR PLACE UNDER THE SUN

The bioclimatic **PIRNAR** pergola is much more than just an obvious choice among pergolas. It provides controlled shading and complete protection from the rain. Its extremely solid construction enables the possibility of larger dimensions even in the free-standing version. Due to its stunning features, you will want to spend most of your free time outdoors.



**Extremely solid construction** with 120 by 120 mm dimensions.



**Minimalist design** with clean surfaces without any visible components.



**Extremely wide profiles** prevent water from overflowing even during heavy rain.



**Very large dimensions** of up to 6.5 by 6.5 metres.



**Effective sealing** with perfect watertightness across the entire pergola, from louvres to the floor.







## TIME FOR FAMILY AND FRIENDS

The most beautiful lunch, the best party, the most romantic evening and the greatest peace can be found ... outdoors. Under the **PIRNAR** pergola.

### DOUBLE YOUR HOUSE

The GRANDE version is one of the most robust pergolas on the market. With the possibility of extraordinary dimensions, the space in front of your house can open into an incredibly relaxing oasis. It is especially suitable for areas with more demanding weather conditions but most of all, it creates a stunning architectural addition to hotels, restaurants and shopping centres, since it covers and effectively protects large areas with fewer pillars.



**Reinforced construction** with 160 by 160 mm dimensions.



**Minimalist design** with clean surfaces without any visible components.



**Prefabricated modular construction** without any additional drilling or cutting.



**Exceptional size** of up to 7.2 by 7.2 metres in length without any additional pillars, making it one of the largest pergolas on the market.



**Effective sealing** with perfect watertightness across the entire pergola, from louvres to the floor.



**Extremely wide profiles** prevent water from overflowing even during heavy rain.







## **GRANDE SPACE FOR GRANDE PLEASURE**

When we think about home improvement, we normally realise that we need more space. With the installation of the GRANDE pergola, we can double or even triple a living room, terrace or dining room.

## THE **STATIC** VERSION

### CREATE YOUR PERFECT SHADE

The **STATIC** version with fixed louvers represents the basis for shading and is most often used as a carport or a functional side-house addition. It can be upgraded by installing additional equipment such as shade fabrics, polycarbonate or glass panels. This model represents the best quality within this price range.



**Large dimensions**  
of up to 6.0 by 4.8 metres.



**Clear, aesthetically refined minimalist lines** with no visible connection points.



**Easy installation** without drainage or electric plugs.







## **THE BREAK YOU DESERVE**

Let's sit in a beautiful shade of a pergola after a busy hot day and just relax. And breathe in and breathe out. Let's stop worrying about things that mean a lot to us.



---

## MAGNIFICENT COMBINATIONS

When we close our eyes and think of home, we can probably think of a place where all architectural elements come together to form a flawless harmony. Whether you live in a cosy stone Mediterranean house or enjoy a typical Alpine home, **PIRNAR** pergolas offer a variety of possibilities for installation and can adapt perfectly to your wishes and needs.







---

## A DESIGN THAT ADAPTS TO YOUR NEEDS

A simple assembly system with modular profiles enables several different construction layouts, depending on the specifics of the building and your wishes:

- free-standing pergola,
- wall pergola,
- built-in pergola,
- custom pergola.



Free-standing pergola

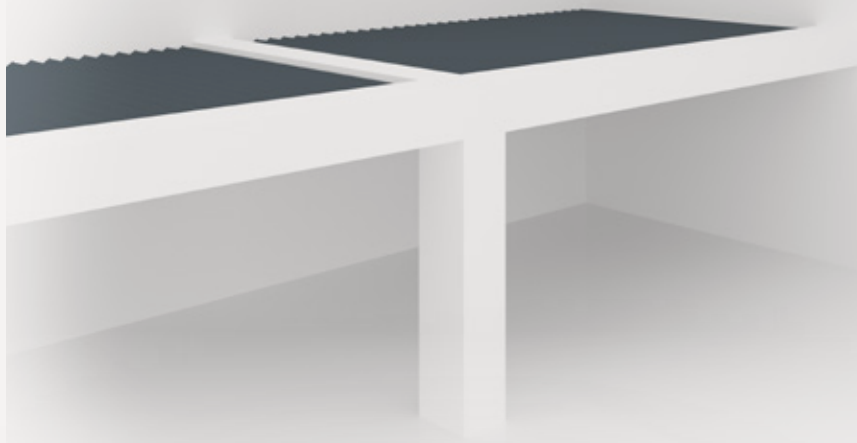


Wall pergola





**Built-in pergola**



**Custom pergola**



## ADDITIONAL EQUIPMENT

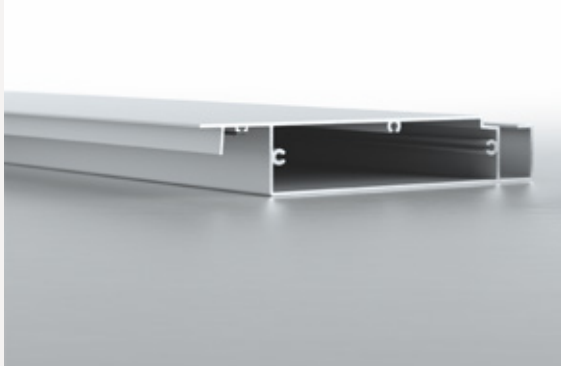
*State-of-the-art equipment for maximum living comfort.*

### LOUVERS

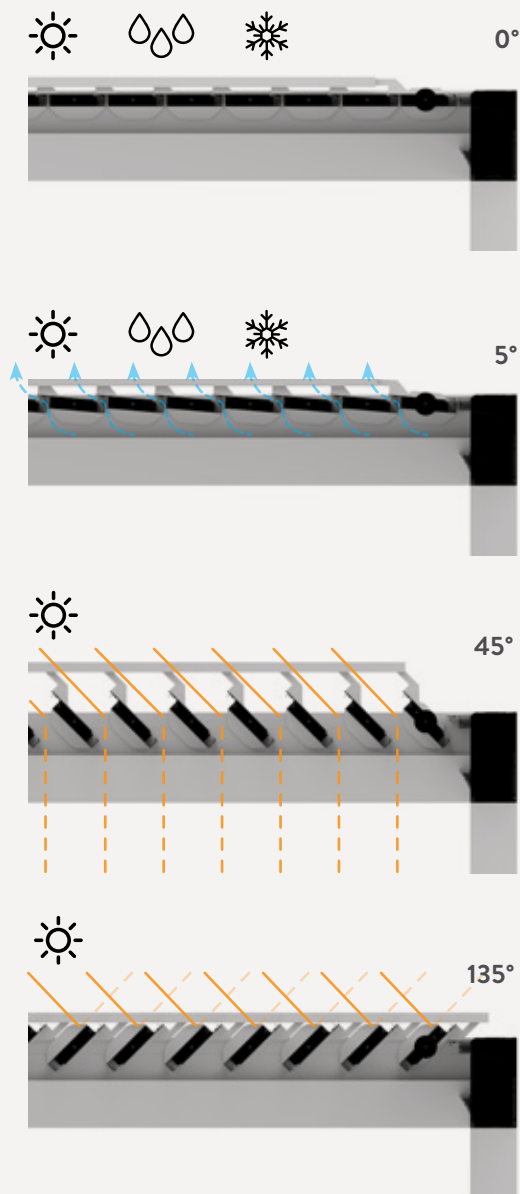
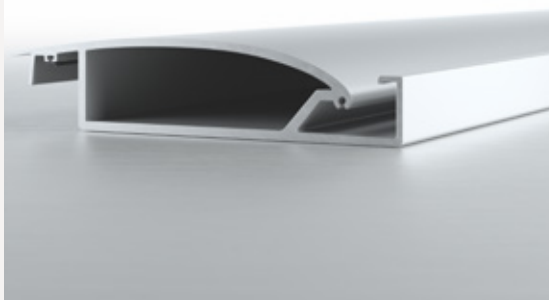
Louvers are one of the key elements of the pergola, as they offer direct protection from the rain, sun and wind. They are motorised and electrically adjustable at different angles (0–135°). The unique and patented rotation system works flawlessly and silently and is completely hidden in one of the louvers.

Louvers are available in two versions:

**STANDARD** – flat louver.  
The basis in all versions.



**MAX** – louver that is rounded at a particular angle.  
Available as an upgrade for more efficient drainage and enhanced stability when installing pergolas of above-standard dimensions.


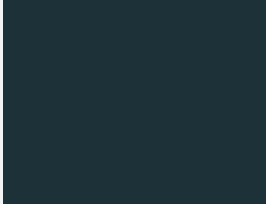





## CHOOSE YOUR COLOUR



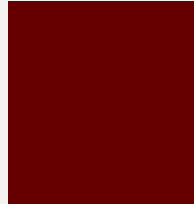
The **PIRNAR** pergola and both models are available in different colours from the selected colour chart, which will aesthetically complement your home.

### Standard colours:

		
Traffic White FS 9016	Anthracite Grey FS 7016	Glimmer Grey 80077

### Optional colours:

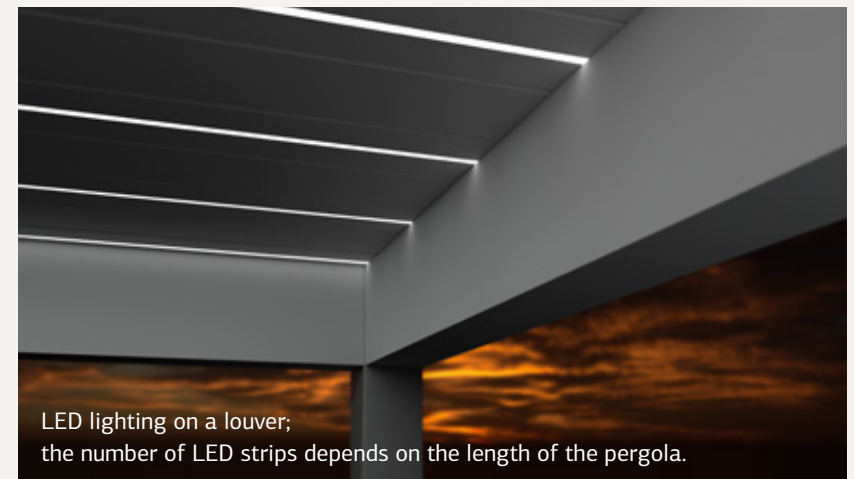
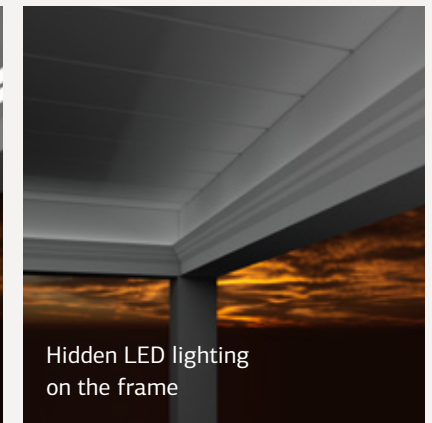
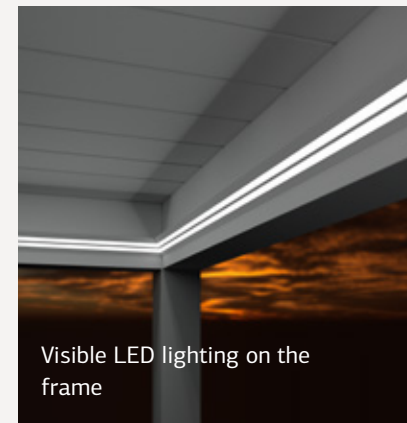
			
White Aluminium RAL 9006	Grey Aluminium RAL 9007	Silver Grey RAL 7001	Basalt Grey RAL 7012

		
Quartz 2 FS QUARTZ 2	Jet Black FS 9005	Purple Red FS 3004

## LED LIGHTING

Thanks to the various forms of lighting and dimming options, you will spend countless unforgettable romantic evenings with your special someone under the **PIRNAR** pergola or hang out with your friends until late hours.

**LED lighting can be installed on the pergola's frame or selected louvers:**



---

## ENJOY YOUR OUTDOOR LIVING SPACE

### ZIP SHADES

Thanks to the latest ZIP technology, our minimalistic and extendable shades made of strong fabrics cover large areas without any additional intermediate support. With the help of effective shading, you will be able to enjoy the persistent afternoon sun for hours. Even annoying insects, wind and rain will be a thing of the past, as you can place an insect-repellent fabric on the shade without reducing its visibility and breathability.



### SLIDING PANELS FOR VERTICAL SHADING

Sliding vertical panels can be inserted into the structure of the pergola to create effective side shading, especially in sections that are most exposed to the sun. The panels are available in three widths: 900, 1000 and 1,100 mm.





### SLIDING GLASS PANELS

Enrich your pergola with minimalist and functional sliding glass panels and turn it into an optimal bioclimatic space. You will be able to create a stunning transparent glass wall that is translucent to maximise sunlight and at the same time offers effective resistance to strong winds.



---

## HAPPINESS IN THE SHADOW

Exceptional architecture blurs the line between interior and the world outdoors. It elegantly connects the intimacy of a home with the feeling of happiness, as one listens to the children playing and at the same time enjoys a beautiful view from the terrace.







## FULL AUTOMATION

### WEATHER SENSORS

State-of-the-art sensors automatically adjust additional equipment on the pergola according to the weather conditions. They allow shade programming and adjust the louvers for up to 135°. A special sensor immediately closes the louvers in case of sudden rain or snow, while wind sensors effectively protect the construction in case of any strong gusts.



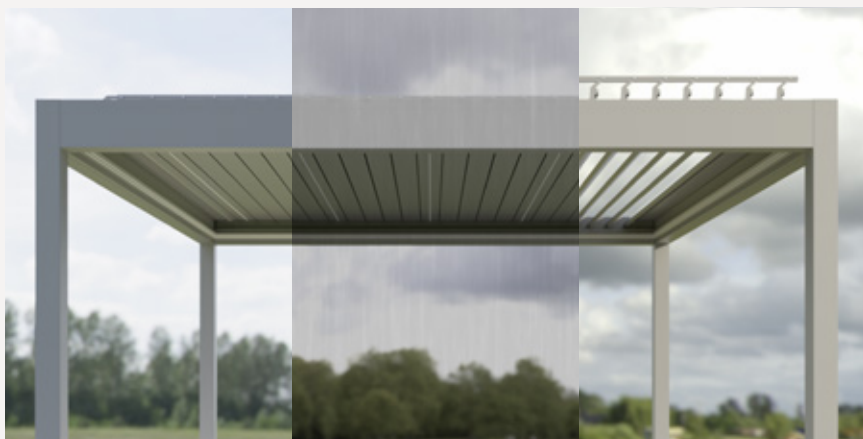
Solar sensor



Rain sensor



Wind sensor



### CONTROLLING

Modern **PIRNAR** pergolas are fully compatible with state-of-the-art automation systems. Everything can be controlled and regulated with a single remote control or even a smartphone.

**You can control the additional equipment in three ways:**



Using a standard Somfy Remote Control



Using a Somfy Nina Remote Control



Using a mobile application on a Somfy Connexoon smartphone



### GIVE US A CHANCE TO IMPRESS YOU!

Please send an inquiry today and request a quotation with an image of Pergola in **PIRNAR** showroom.

### LONDON SHOWROOM

Unit 1, The Wireless Factory, Fleming Way, Isleworth, TW7 6DB

### BEDFORDSHIRE SHOWROOM

Unit 10 Sedgwick Rd, Luton LU4 9DT

**T** 015 8224 96 97

**E** london@pirnar.co.uk

**WWW.PIRNAR.CO.UK**



**PIRNAR.**